

N^o 3829



A.D. 1894

Date of Application, 22nd Feb., 1894

Complete Specification Left, 20th Nov., 1894—Accepted, 15th Dec., 1894

PROVISIONAL SPECIFICATION.

Improvements in Book-edge Locks.

We, HARRY LAMBERT SYMONDS, of the Firm of S. Mordan & Company, Manufacturers, and RICHARD LANGHORN, Locksmith, both of 41, City Road, in the County of London, do hereby declare the nature of this invention to be as follows:—

5 The object of our invention is to so construct book-edge locks that the parts thereof, especially the hasps, shall be out of the way when the book is open and in use.

For this purpose, the hasps or catches, with which the bolt of the lock engages, are hinged or pivotted in a recess, or recesses, formed in a plate secured to one of 40 the covers of the book, and are adapted to be turned down parallel and flush, or practically so, with the edge of the said cover when the book is unlocked and in use. These hasps are of such a length as to extend across the front of the book, and their extremities are so formed as to enter the lock and engage the bolt thereof. The said lock is, according to our invention, secured to, and lies parallel and flush, 15 or nearly so, with the other cover of the book, instead of being placed across the front of the book as has heretofore been usual.

By this arrangement the book when open, and after the hasps are turned down, does not present any projecting parts likely to cause inconvenience.

Dated this 22nd day of February 1894.

20

ERNEST DE PASS,
Chartered Patent Agent,
78, Fleet Street, London, and 6, Victoria Street, Nottingham,
Agent for the Applicants.

COMPLETE SPECIFICATION.

Improvements in Book-edge Locks.

25

We, HARRY LAMBERT SYMONDS, of the Firm of S. Mordan and Company, Manufacturers, and RICHARD LANGHORN, Locksmith, both of 41, City Road, in the County of London, do hereby declare the nature of this invention and in what manner the same is to be performed, to be particularly described and 30 ascertained in and by the following statement, reference being had to the accompanying drawings and to the letters and figures marked thereon, that is to say:—

This invention relates to improvements in book edge locks, and it has for its object to so construct the same that the parts thereof, especially the hasps or 35 catches, shall be out of the way when the book is open and in use.

For this purpose, the hasps or catches with which the bolt of the lock engages, are hinged or pivotted in a recess, or recesses, formed in a plate secured to one of the covers of the book, and are adapted to be turned down parallel and flush, or practically so, with the edge of the said cover when the book is unlocked and in 40 use. These hasps, or catches, are of such a length as to extend across the front of the book, and their extremities are so shaped or formed as to readily enter the lock and engage the bolt thereof.

[Price 8d.]

Symonds and Langhorn's Improvements in Book-edge Locks.

The said lock is, according to our invention, secured to and lies parallel and flush, or nearly so, with the other cover of the book, instead of being placed across the front of the book, as has heretofore been usual.

By this arrangement the book, when open, and after the hasps have been turned down, does not present any projecting parts likely to cause inconvenience. 5

And in order that our invention may be readily understood, we proceed to describe the same fully by aid of the accompanying drawings, in which :

Fig. 1 is a front edge view, showing one of our improved book edge locks applied to a book.

Fig. 2 is a plan, showing the lower cover of the book, with the hasps turned down. 10

Fig. 3 is an edge view corresponding to Fig. 2; and

Fig. 4 is a plan of the upper cover of the book.

a is the upper cover plate which carries a spring or other lock, and *b* is the lower cover plate, both these plates being rivetted to the covers of the book. The cover plate *b* is formed with a recess *c*, in which are pivotted at *d* the hasps or catches *d*. 15
Between these hasps is a stop piece *c*¹, against which the hasps, when in their raised position, bear, and by means of which they are prevented from being turned beyond their vertical position.

The lock carried by the upper cover plate *a*, is let into a recess in the cover of 20 the book, and lies flush with the inner surface of such cover. *a*¹ is the keyhole of the lock, and *a*² are apertures to receive the notched ends of the hasps. To close the book, the hasps are turned up into the vertical position, shown in Fig. 1, and their notched ends directed into the apertures *a*², when, by pressing the covers towards each other, the bolt *a*³ of the lock is caused, by its spring, to engage the 25 said hasps and so securely keep the book locked.

To open the book, it is only necessary to insert the key so as to disengage the bolt from the hasps, when the cover can be raised, so freeing the hasps and allowing them to be turned down into the recess *c*, and to lie parallel and flush with the edges of the book as shown in Figs. 2 and 3. 30

In some cases, instead of employing a lock and key to fasten the hasps, a catch or push piece may be fitted in the plate *a* to engage the hasps, and recesses or apertures may be formed in the said plate for the hasps to enter.

Having now particularly described and ascertained the nature of our said invention and in what manner the same is to be performed, we declare that 35 what we claim is :—

1. The construction of book edge locks in such a manner that their hasps or catches may be so turned as to lie parallel and flush with the edge of the book, when the latter is open and in use, substantially as and for the purposes described. 40

2. A book edge lock having its hasps or catches pivotted in a recess in one of the cover plates, and adapted to lie therein when the book is open, but to enter apertures in the lock and be engaged by the bolt thereof when the book is closed, said lock being formed in the other cover plate and lying parallel and practically flush with the cover of the book, substantially as described and shown. 45

3. Our improvements in book edge locks substantially as hereinbefore described and as shown with reference to the accompanying drawings.

Dated this 20th day of November 1894.

ERNEST DE PASS,
Chartered Patent Agent, 50
78, Fleet Street, London, and 6, Victoria Street, Nottingham,
Agent for the Applicants.

Fig. 1.

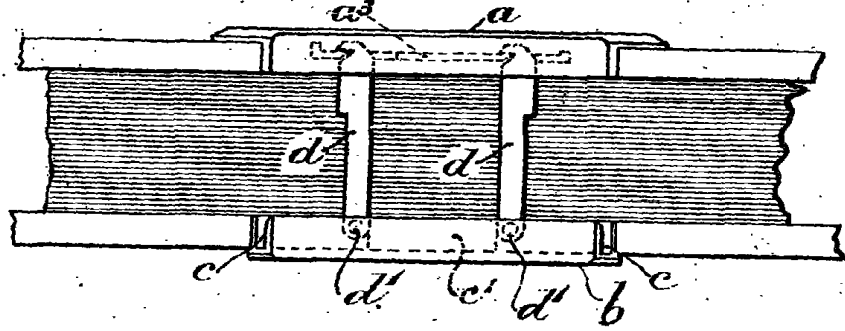


Fig. 2.

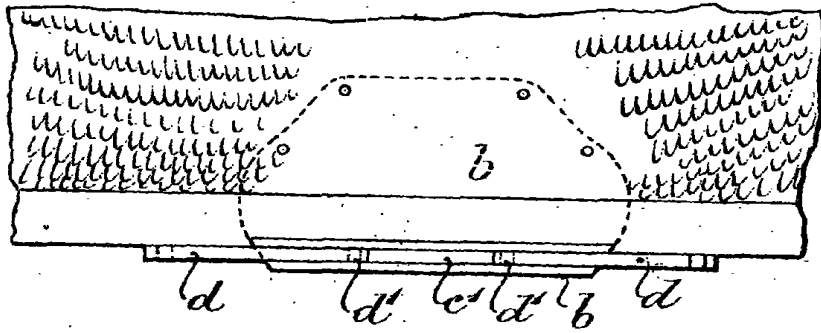


Fig. 3.

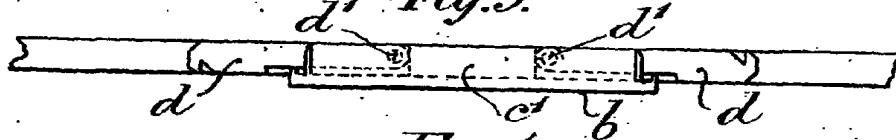
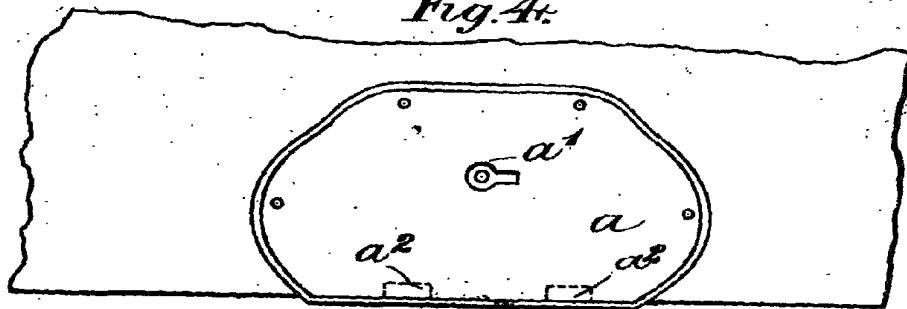


Fig. 4.



[This Drawing is a reproduction of the Original on a reduced scale.]